



COMMUNITY UPDATE

Macdonald Block Reconstruction Project

Since being awarded the Macdonald Block Reconstruction Project in 2019, Fengate PCL Progress Partners are embarking on year three of the retrofit.

The project involves meticulously taking each of the five buildings back to their original building core and rebuilding them with heritage preservation top of mind. This includes updating all core building systems and enhancing office accommodations to modern accessibility standards.

Recent Construction Activity

On the building exterior, you will continue to see physical changes as we transition tarping and scaffolding from the Ferguson and Mowat towers to the Hearst and Hepburn towers, enabling the team to continue restorative work on the campus' limestone exterior.

Based on the proximity of the Hearst building to Wellesley St. W., the team installed a covered walkway in February to support public safety. In early March, a partial road closure was required to support material delivery to Ferguson building's roof.

Thank you for your patience as we conducted these activities with the safety of the community in mind.

Progress Snapshot - Wellesley St. W.



Covered walkway pictured above.

Did you know...The covered walkway is expected to remain in place until at least summer of 2023 to ensure public safety. PCL is assembling the scaffolding and completing the heritage stone restoration work inside the scaffold, followed by scaffolding dismantling.

On the Inside

As important heritage restoration work continues on the exterior of the building, a flurry of activity is happening on the inside of the four towers and connecting podium. The work on the interior is ongoing to strategically deconstruct and reinstate critical features of the buildings.

To retrofit the building to modern systems and materials, a significant amount of demolition is required to replace systems that have reached the end of their useful life.

Progress Snapshot – Deconstruction

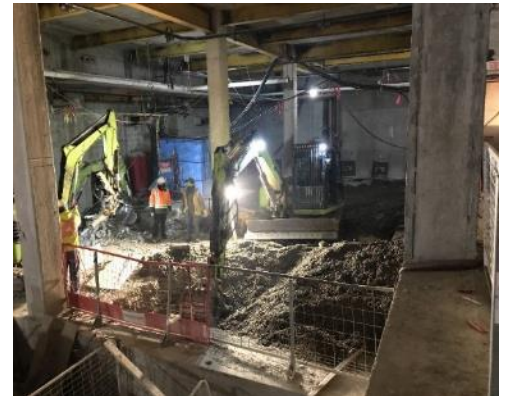


Image of the basement floor being deconstructed provides perspective into the intensive reconstruction efforts.

For example, to remove and replace existing mechanical and electrical services in the basement, the entire floor foundation is dug up, and existing infrastructure is removed to make way for new services.

The project team would like to recognize all of our partners involved in achieving these important reconstruction efforts.

Minimizing Disruptions

The project team remains committed to minimizing the impact of construction on the community. In collaboration with our partners, we strive to schedule disruptive work during daytime hours wherever possible.



Building Community

Beyond building projects, the design-builder PCL extends its commitment to being a good neighbour by supporting the local communities in which they build.

We'd like to thank PCL for organizing a toy drive at the end of 2021 to spread holiday cheer.

Their efforts and generosity resulted in a truckful of toys being donated to the Toronto Fire Fighters Toy Drive.

Safety

The safety and well-being of our workforce and our community remain our highest priority. We continue to follow all applicable government and public health protocols as we continue to navigate the COVID-19 pandemic

More Information

If you have questions related to site construction activities, please contact: MBRproject@pcl.com. Information about the Macdonald Block Reconstruction project is available on: [Infrastructure Ontario's website](https://www.infrastructureontario.ca).

For questions or comments related to the overall Queen's Park Reconstruction Project, involving the reconstruction of the Macdonald Block and the rehabilitation of the Whitney Block, please contact: QPRP@infrastructureontario.ca.

About the Project

The Macdonald Block Complex is the administrative hub of Ontario government operations. It consists of five buildings: four office towers connected by a two-storey podium.

Completed in 1971, the Macdonald Block Complex has never undergone a major renovation. The reconstruction project is updating all core building systems, including electrical, water, cooling and heating, which have reached the end of their useful life and must be replaced. Office accommodations will also be enhanced for modern accessibility standards.

Each building in the complex is being taken back to its original building core, remediated and rebuilt using modern technologies, systems and materials while preserving the integrity of its many heritage features.

The newly reconstructed complex will meet current building, health, safety, and accessibility standards and will accommodate significantly more employees through more efficient use of this government-owned office space.

Construction is expected to be substantially complete in the spring of 2024, with staged occupancy beginning soon after that.

