

# NEW TORONTO COURTHOUSE CONSTRUCTION UPDATE

SUMMER 2022

Infrastructure Ontario and the Ministry of the Attorney General selected EllisDon Infrastructure to design, build, finance and maintain the project. Their team includes: EllisDon Capital Inc., EllisDon Design Build Inc., Renzo Piano Building Workshop and NORR Architects & Engineers Limited, EllisDon Facilities Services Inc. and SNC Lavalin O&M.

## PROJECT HIGHLIGHTS

- 17-storey high-rise courthouse, a first in Ontario, will amalgamate six Ontario Court of Justice criminal courthouse locations.
- 63 courtrooms including a multiple accused, high security courtroom and ten conference/ settlement rooms.
- Barrier-free environment to allow visitors and occupants to travel throughout the building with ease.
- Improved security features are integrated throughout the design of the courthouse.
- The project will feature the first Indigenous Learning Centre in an Ontario courthouse.
- A commitment to meet the Leadership in Energy and Environmental Design (LEED®) Silver standard, including a focus on energy efficiency and high-quality indoor environment.
- Increased foot traffic for businesses in the area.
- The project will support hundreds of jobs, with up to 500 workers on site at peak periods of construction.
- Public realm improvements in coordination with the City of Toronto.

## PROJECT STATUS

**Start of Construction:** Fall 2018

**Commencement of Operations:** Spring 2023

### What's Happening:

- Building structure complete, including 16 levels of cast-in-place concrete and 2 levels of structural steel with metal deck.
- Building envelope complete, including custom curtainwall on the East, South and West facades, a cable-wall system at the atrium, and architectural precast panels wrapping around from the North façade.
- Detention areas complete at Level B1 and adjacent to courtrooms, including prisoner sallyport, counsel consulting cubicles, and Toronto Police Services offices, lockers, and break areas.
- Finishes are ongoing in the atrium, with finished concrete columns, ceilings, and quartz wall paneling complete. The current phase of atrium finishes includes escalator cladding, glazed balustrades, and custom architectural cornice details to match the exterior podium. Also ongoing in this area is a montage wall featuring vinyl-wrapped metal panels suspended from the ceiling, demonstrating the history and cultural legacy of this neighbourhood.
- Millwork finishes are nearly complete in all courtrooms on twelve different floors as high as Level 14, which are being followed by the installation and commissioning of the audio-visual and security equipment.
- All elevators have been installed including interior finishes.
- Public corridors finishes are ongoing throughout the building on upper levels, including quartz wall paneling, terrazzo flooring, millwork, glazing, and signage.
- Unique architectural features being installed include steel canopies with a custom extruded cornice profile and an 89-meter-tall architectural mast that will project 25 meters above the roof of the building at Level 18, which is almost entirely covered by a large solar array. This mast is scheduled to be installed summer of 2022.
- Green roof on lower levels 3 and 4 is complete.

## OPERATION DETAILS

EllisDon continues to be vigilant of concerns regarding construction-generated noise and is minimizing noise levels as much as possible out of consideration for the community. Daily site operations comply with the hours prescribed in the City of Toronto Noise bylaw\*:

- Monday to Friday 7:00 a.m. - 7:00 p.m.
- Saturday 9:00 a.m. - 7:00 p.m.
- No construction noise on Sunday and statutory holidays.

In extenuating circumstances, operation may be required outside these hours. Should this occur, special permission would be obtained from the City. *\*(Chapter 591, City of Toronto Municipal Code. Amending by-law 505-2006.)*

Vibration levels are being monitored regularly against City of Toronto by-law No. 514-2008 vibration limits.

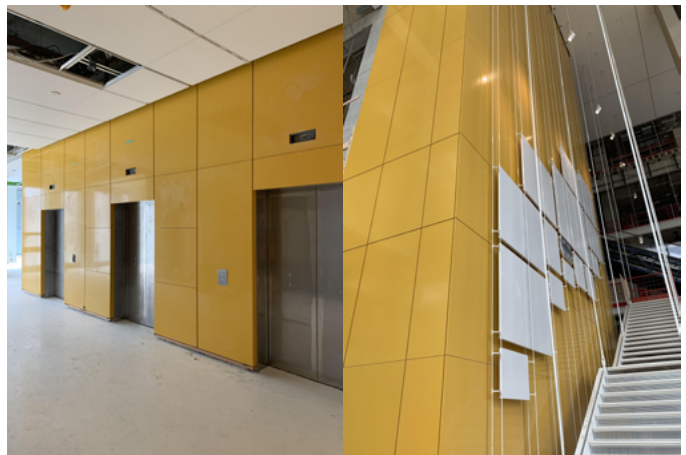
## COMMUNITY SAFETY

The security and safety of workers and people who live and work in the neighbourhood around the New Toronto Courthouse is of the utmost importance to EllisDon, who will ensure that:

- Existing level of street lighting will be maintained or improved.
- Site features 24/7 security throughout the duration of construction.
  - Dedicated signal personnel will divert construction traffic and ensure measures for pedestrian safety at crossings adjacent to the site, as required.
- Street continues to be cleaned daily.

## CONSTRUCTION PROGRESS

The New Toronto Courthouse has undergone significant developments since construction commenced. See the latest progress images below.



New Toronto Courthouse Update | Summer 2022

## ASK US!

Infrastructure Ontario and EllisDon are committed to providing information about New Toronto Courthouse construction activities in a timely manner.

To learn more about construction activities for the project, please visit the New Toronto Courthouse page on our website: <http://infrastructureontario.ca/New-Toronto-Courthouse/>

Email us at: [susan.king@infrastructureontario.ca](mailto:susan.king@infrastructureontario.ca)

